





JOT D-M

with universal bracket

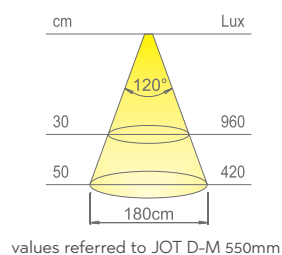
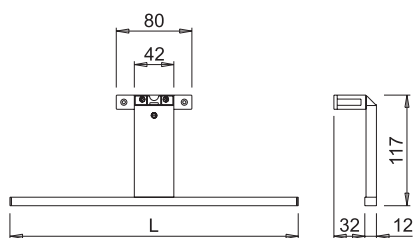
| Length | Watt | Volt |
|--------|------|---------------|
| 305 mm | 5 W | 220 ÷ 240 VAC |
| 550 mm | 7 W | 220 ÷ 240 VAC |

230V

D-M



JOT D-Motion integrates a light source used for the step selection of the colour temperature of the luminaire, with two available steps (3000 K and 4000 K), directly from the switch of the main electrical system it is connected to.



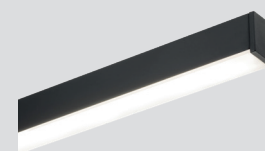
| | |
|----------------------------|----------------|
| Colour appearance | D-MOTION white |
| Colour temperature | 3000 - 4000 K |
| Luminous flux | 575 - 1015 lm |
| Luminous efficiency | 115 - 145 lm/W |
| CRI | Ra ≥ 80 |

JOT D-MOTION

LED luminaire for bathroom mirrors

JOT D-Motion is a luminaire with symmetrical light projection, recommended for lighting bathroom mirrors. JOT D-Motion is supplied with a universal fixing bracket for installation on the edge of the mirror, directly on the mirror or on the cabinet. Available in touch black and polished chrome finishes. Integrated power supply.

CE UK IP44



touch black



chrome plated

This product contains a light source of energy efficiency class C (550mm) and D (305mm)